



KONICA MINOLTA

AccurioPro
Color Manager Suite

**MANAGE YOUR
COLOURS EASILY**
RETHINK EFFICIENCY



Giving Shape to Ideas

EASY-TO-USE COLOUR MANAGEMENT SOLUTION THAT MEETS EVERY DEMAND

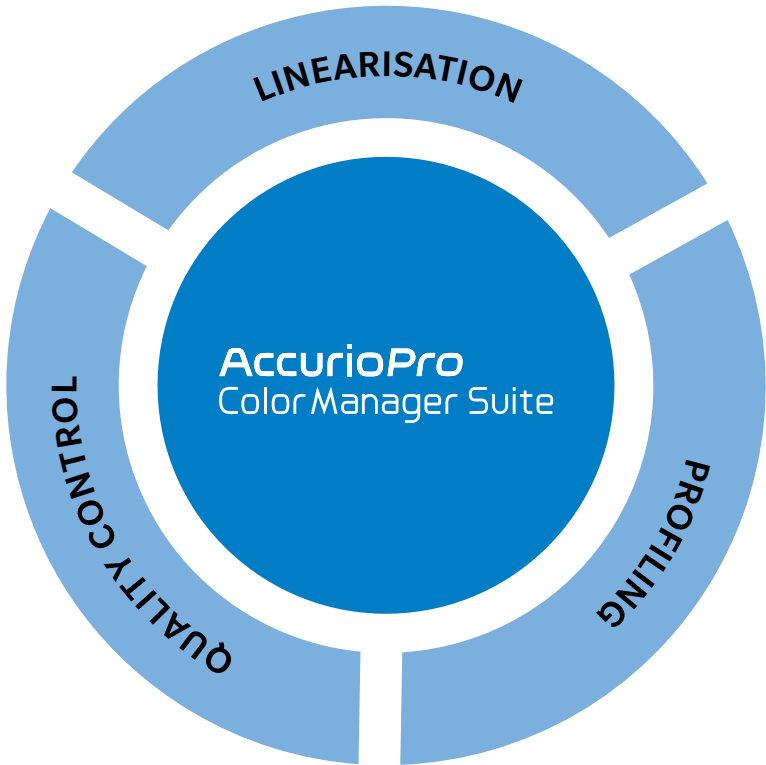
Streamline your colour management with the AccurioPro Color Manager (APCM). The APCM Suite is a combination of tools to linearise, profile, validate and control the colour quality of your printing presses. Maximise the throughput of your fleet; and increase the efficiency of your print room with the APCM’s straightforward operation and streamlined processes.

PERFECT FOR EVERY USER

The unique and comprehensive combination of features in a single suite makes APCM an unparalleled offering in the world of colour management and control. The user-optimised interface and wizard-based workflow interaction reduce learning curves and make using the software simple and intuitive even for inexperienced operators.

THREE ASSETS IN ONE TOOL

AccurioPro Color Manager is a wizard-based software that facilitates both, the linearisation of your print engine to achieve the performance level required by the printer, and the profile creation for precise reproduction of the colour that you intend to output. In addition, its capability to verify the created profile avoids process errors and ensures accurate operations. This valuable combination gives you effective and error-free quality control.



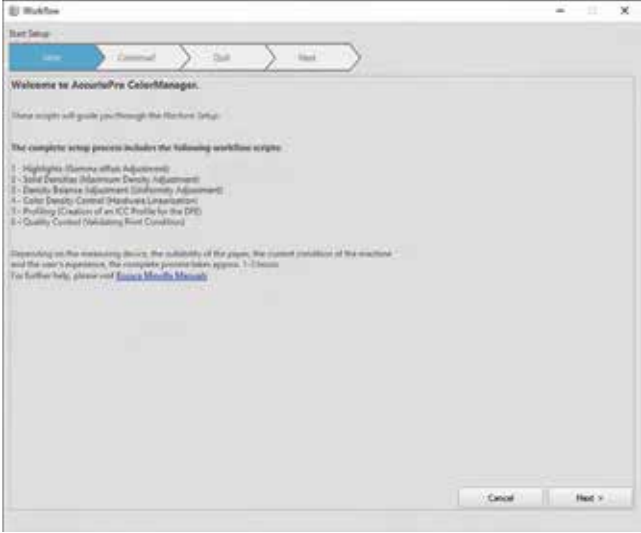
ACCURIOPRO COLOR MANAGER

KEY FEATURES

BASIC ENGINE SETUP OR LINEARISATION

Linearization is key to ensuring the best possible print quality of a printing press. Only if the setup of the engine is done in the right and proper way following all required steps, the optimum results be achieved. The AccurioPro Color Manager guides operators through the recommended processes, which include:

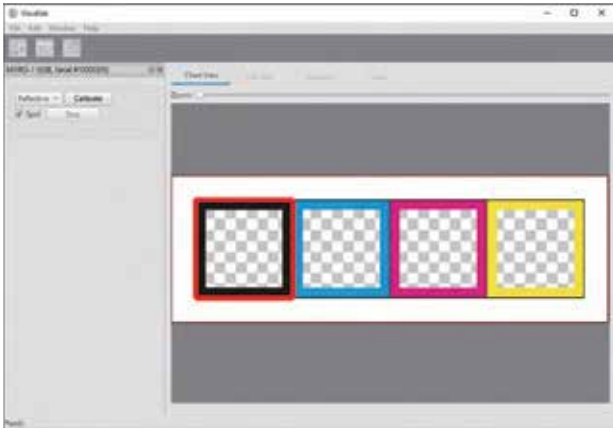
- Highlight adjustment
- Maximum density adjustment
- Density balance control
- Colour density control



GAMUT CHECK

The gamut or linearisation check is done after the linearisation. It clearly shows the operator if the setup was successful or if a readjustment is required to ensure optimal and stable colour quality in the printer engine.

In addition, the gamut check can be utilised to verify before profile creation if a specific paper type is capable of reproducing the required colour gamut. This avoids waste prints as well as wasted efforts of the operator.



PROFILING

The AccurioPro Color Manager Suite includes a high-quality printer profiling tool to create ICC and/or device link profiles that are perfectly optimised for the paper in use and the conditions of the print engine.

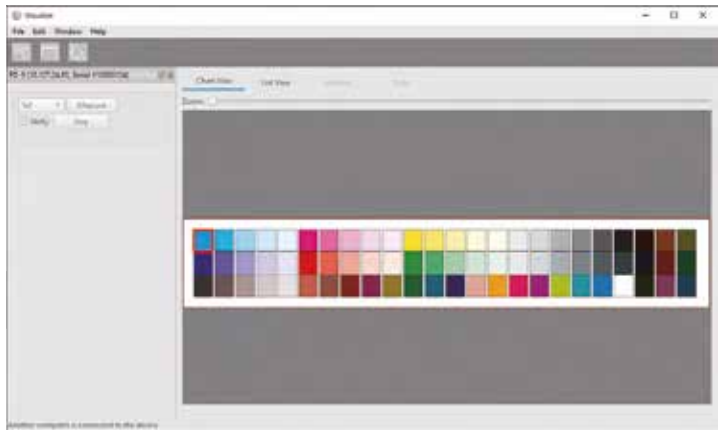


The operator can choose between several predefined profile settings to get the best result for his needs:.

ICC Standard	Printer profile	Standard printer profile setting. This is used for production printing in CMYK workflows.
ICC max.Black	Printer profile	Black replacement prioritized setting. This reduces toner consumption while keeping the colour quality as good as possible.
DL Standard	Device link profile	CMYK-CMYK device link profile for production printing in CMYK workflows.
DL Simulation	Device link profile	CMYK-CMYK device link profile used for proof printing (simulation) and printing on coloured media.
DL RGP production	Device link profile	RGB-CMYK device link profile used for production printing in RGB workflows. For perceptual quality for e.g. photographs.
DL office print	Device link profile	RGB-CMYK device link profile for printing of business documents. For eye-catching graphics where colour impact is more important than colour accuracy.

QUALITY CONTROL

This helps check ICC profile accuracy using ICC-based colour simulation technology. It can confirm whether a newly prepared ICC profile has been correctly and precisely generated by the correct processes and operations, or not.

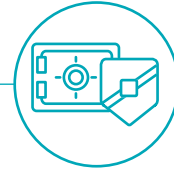


10 GOOD REASONS FOR AccurioPro Color Manager



1. BOOSTS PRINTER UPTIME

Reducing the time needed for manual adjustments



2. OFFERS HIGH RELIABLE

And standardized print products



3. IMPRESS YOUR CUSTOMERS

With your expertise in handling their jobs



4. GAIN & IMPROVE CUSTOMER LOYALTY

By offering everyone the right and fully dependable service



5. RAISE THE QUALITY

Of your print offerings



6. AVOIDS AMBIGUOUS DISCUSSIONS

About colour reproduction with customers



7. GUARANTEED COLOUR PRINT

Quality with easy-to-use tools.



8. PRECISE COLOUR MATCHING

Even for novice operators, avoiding or at least minimising any learning curve



9. CONSISTENT COLOUR REPRODUCTION

Assured for the long term

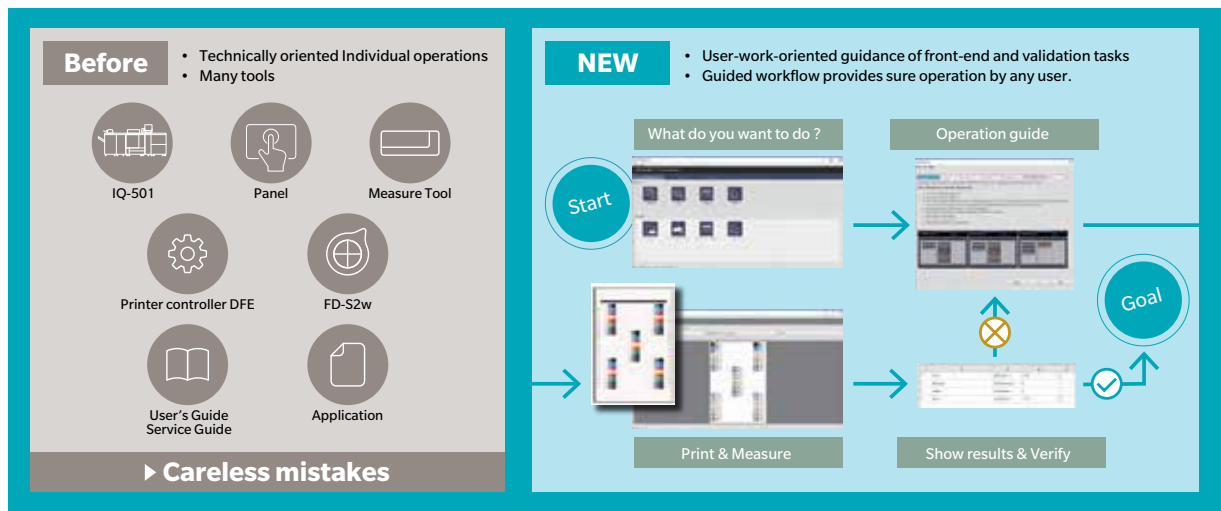


10. REDUCES MISPRINTS

And the need to rework or reprint jobs

YOUR BENEFITS AT A GLANCE

- Boost your uptime with shortest standstills of your press; and enhance the efficiency of your staff in setting up devices to produce the best quality.
- Reduce your costs with minimised setup and reduced manual adjustment times, fewer misprints and minimal training requirements.
- Improve your customers' loyalty with highly reliable print products; and prove your expertise with top-quality print applications.



TECHNICAL SPECIFICATIONS RETHINK INNOVATION

System Requirements		Interface	USB 2.0 (Hi-speed) or Ethernet (100BaseTx)
OS	Windows 8.1, 10; MAC OS X 10.10, 10.11, 10.12, 10.13, 10.14, 10.15	Display	Display hardware capable of displaying 1024 x 768 pixels or more; 1366 x 768 pixels or more is recommended
CPU	Intel® or AMD processor with 64-bit support	Interface (depending on measurement device)	USB 1.1 USB 2.0 (Hi-speed) Ethernet (100BaseTx) Wireless LAN
Memory	At least 4 GB ; 8 GB recommended		
HDD	At least 8 GB of available hard disk space is recommended		

Regional Headquarters
Konica Minolta Business Solutions Asia Pte Ltd.
 30 Pasir Panjang Road, #06-32
 Mapletree Business City
 Singapore 117440
 Tel: +65 6361 2800
 Fax: +65 6361 2888
 Email: enquiry@konicaminolta.sg
 www.konicaminolta.asia/business

PRESENCE IN THE REGION
 Bangladesh . Bhutan . Brunei . Cambodia . Indonesia . Laos . Malaysia . Mauritius . Myanmar . Philippines . Singapore . Sri Lanka . Thailand . Vietnam

About Konica Minolta Business Solutions Asia

Konica Minolta Business Solutions Asia is transforming the workplace of the future with its customer-centric solutions and hardware for the digitally connected world. We are committed to creating new values for the society with our expertise. From information management to technology enabling tools, the solutions help businesses improve their time to information, support mobility, and optimize business processes with workflow automation. Konica Minolta, Inc. has also been named to the Dow Jones Sustainability World Index, one of the most prestigious global indices of ESG investment, for seven years in a row. For more information, please visit <http://www.konicaminolta.sg/business/>.

(Information accurate as of 1 October 2019)

Our organisation is certified according to ISO27001, ISO9001, ISO14001 and ISO13485 standards.

