



KONICA MINOLTA

Giving Shape to Ideas

Enhanced Reliability Empowered Productivity



Accurio**Press** C3080/C3080P/C3070
Accurio**Print** C3070L*

*Contact your local distributor for product availability

AccurioPress C3080 SERIES

The AccurioPress C3080 series is designed to deliver all your printing expectation. With improved machine technology, offering higher quality print materials with greater reliability and stability.



High Productivity

- » High-speed printing up to 81ppm (A4) , 45ppm (A3)
- » High-speed auto-duplex scanner up to 240 ipm
- » Real-time monitoring and adjustment with no downtime

Automatic Technology

- » Automated colour tone/ front-to-back registration
- » Automatic creation of printer profiles
- » Manual measurement/input work is no longer require

Flexibility

- » Paper length compatible with banner printing is extended to 1,300mm
- » Auto-duplex printing capability of max. 762mm long paper is newly incorporated
- » Reliable transport and high quality envelope printing at lower cost with envelope dedicated fusing unit

Seamless Integration

- » Linkage with AccurioPro series workflow solution makes it possible to establish an efficient workflow



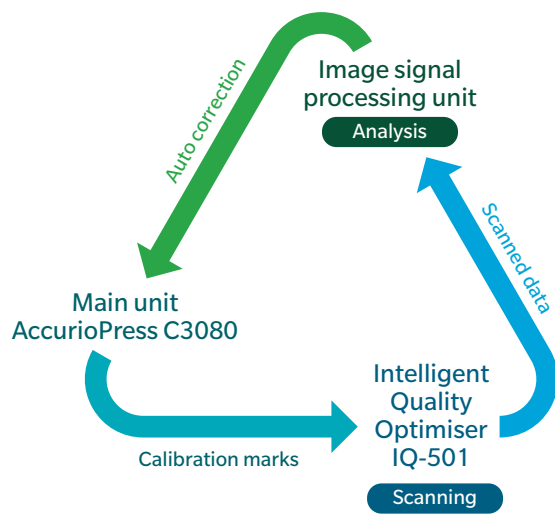
Automation Less human touch & less human error

Intelligent Quality Optimiser IQ-501

High-precision colour and registration adjustments prior to printing

Auto colour , Real-time gradation & Front-to-back registration adjustment

The Intelligent Quality Optimiser [IQ-501] enables automated colour management and front-to-back registration adjustment. High quality is maintained thanks to real-time monitoring and adjustments during printing, contributing not only to cost reduction with less waste but also to improve customer satisfaction.



Equipped with two scanners, the IQ-501 implements real-time correction through one-pass including auto-correction of colour and front-to-back registration. In addition, hybrid colourimetry using a Konica Minolta's reputable spectrophotometer enables highly accurate colour correction.



Intelligent Quality Optimiser - IQ-501

Superior Image Quality Colour Accuracy & Output Stability

High quality with energy-saving

Simitri HD^E Toner

The Simitri HD^E Toner ensures a high level of compatibility with various types of media and enables realisation of ideal natural textures. In addition, it requires only a small amount of heat for fusing, significantly reducing power consumption.

■ Blue Wool Test: The results according to ISO 105 B2 (lightfastness test).

● Cyan	8*1	● Yellow	8	Remarks: The evaluation criteria is classified into 8 levels (1 to 8 levels), and the higher the value, the higher the lightfastness.
● Magenta	6-7	● Black	8*1	

*1: The test results indicate that the lightfastness of Cyan and Black toner is ranked as 8 or higher.

Selectable screens according to the application

High quality screens

Equipped with a total of 12 types of screen, 6 dot screens, 3 line screens and 3 stochastic (FM) screens, the system can be matched to applications and purpose such as proof output, photograph printing and moire suppression.



Rough screen 130L

Standard screen 190L

Stochastic screen FM-1

Flexibility

Compatible with a wide range of paper thickness and length for expansion of the print services

AccurioPress flexibly supports various print jobs including 350gsm thick paper and maximum 1,300mm banner printing as well as auto duplex banner printing and low cost, stable envelope printing. The enhanced capability to handle a variety of print jobs contributes to expansion of new services and business opportunities

Supports wide range of paper weight

Thick paper printing up to 350gsm

Capable of 350gsm thick paper printing. In addition to sample package printing, print service variations are expanded to include tags, DM, stand menus and sales promotion tools.



Enhanced Class-leading banner printing capability

Enhanced Class-leading banner printing capability

Enhanced banner printing length

Top-class banner printing capability up to 1,300mm and auto duplex up to 762mm, allowing efficient print work for the production of A4/letter size tri-fold menus, pamphlets and catalogues.



High volume paper supply for minimum downtime

Large capacity paper feeding & stacking

STACK CAPACITY

10,000
sheets (Max.)

FEED CAPACITY

15,390
sheets (Max.)



Connecting a 3-tray Paper Feed Unit [PF-707m]^{*1} in tandem in addition to the main unit tray with a paper-feeding capacity of 1,500 sheets realises a maximum paper-feeding capacity of 15,390 sheets. An efficient print work is realised even in a high-volume printing by reducing the time and effort for paper replenishment. In addition, connecting two units of Large Capacity Stacker [LS-506]^{*1} in series allows stacking a large volume stack as much as 10,000 sheets. Finished documents can be taken out with the cart as they are for ease of transport to the next process.

USABILITY

Powerful Controller to Optimise the printing performance

Featuring high affinity with the advanced job & colour management

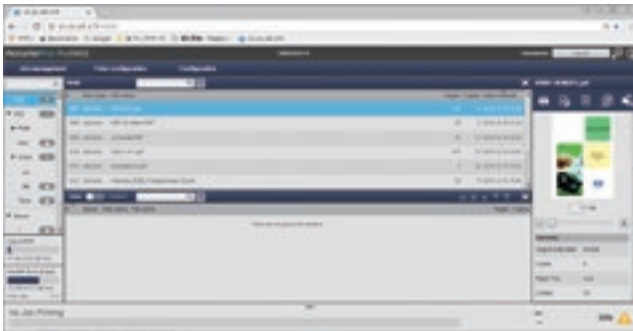
Konica Minolta Image Controller [IC-605]

Optional

Konica Minolta's exclusive internal image controller delivers a powerful, affordable colour management solution that supports Konica Minolta Solution Platform Open API and IWS-related applications. The new web-based job management interface lets the user manage their jobs in any web browser without the need to install proprietary software.

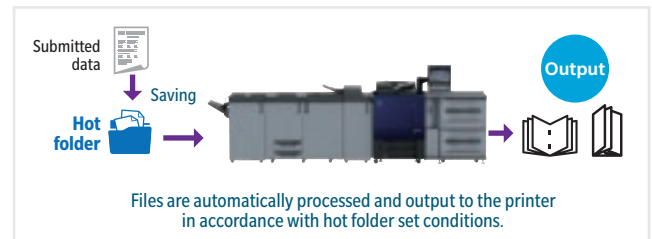
→ AccurioPro Print Manager

Easy-to-use interface having a high degree of affinity with the main body panel printer driver supports more efficient operation. In addition, Color Centro (IC-605 Color Management Utility) also can be started up from this screen, enabling seamless management performance



→ AccurioPro HotFolder

It allows you to directly print a PDF or TIFF file without starting an application. You can also preset the job settings and reduce the burden of making print settings. This will contribute to reduction of manpower required for job registration as well as of processes need to be performed by the operator



→ Equipped with APPE4.2 (optional)

Equipped with Adobe's APPE 4.2 (Adobe PDF Print Engine 4.2), which directly processes PDF files without having to access a printer driver for appropriate transparent effects.

Controllers with high-spec functions and usability

Fiery Print Controller [IC-313/IC-417]

Optional

→ High speed processing & high quality

Realises both RIPping at 1200dpi × 8bit and high speed processing. With a wide range of colour profiles, flexible colour management is made possible.

→ Colour management

IC-313/417 performs colour management for each CMYK, RGB and spot colour space irrespective of the application or file format, making it ideal for colour management matched to purposes such as proofing and production of final deliverables.

→ Equipped with APPE 4.4

Equipped with a new APPE 4.4 (Adobe PDF Print Engine 4.4), which supports transparent effect processing of PDF files as standard*1.

*1 Supported only by [IC-313]

→ Command WorkStation

Efficiently manages jobs from a PC on the two screens of Job Center and Device Center.



Job Center

Device Center

INLINE FINISHING

Efficient post-processing is enabled with high-spec in-line finishers (optional)

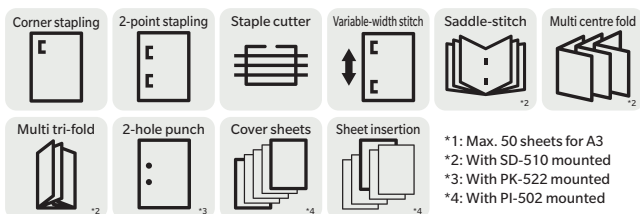
A diverse inline finisher lineup for added value

Accomplish more with a range of inline finishing options that efficiently meet the needs of diverse output formats and differentiate companies from the competition.

Space-economical, all-in-one stapler

Finisher [FS-532]

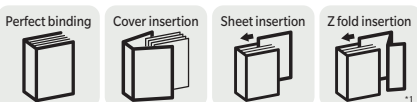
The stapling finisher with staple cutter is capable of stapling up to 100*1 sheets. Three sub-options can be mounted to expand the system to enable saddle-stitching, post-insertion and punching, making it possible to perform multiple operations in a small space.



Booklet making up to 600 pages

Perfect Binder [PB-503]

Perfectly binds up to 600 pages or up to 30mm thick. Cardstock up to 216 gsm can be used for the cover to realise high-quality bookbinding through advanced paper alignment. In addition, use of Multi-Folding Unit [FD-503] enables insertion of Z fold sheets while perfect binding is in process. This enables flexible bookbinding work owing to the ability to insert A3 size drawing sheets in booklets such as reports and manuals.

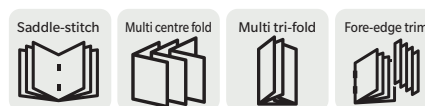


*1: With FD-503 mounted

For small lot manual and catalogue

Saddle-Stitcher [SD-506]

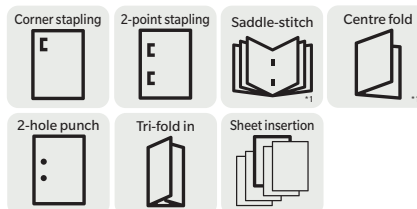
Capable of saddle-stitch bookbinding of up to 200 pages (80gsm) and furnished as standard with an fore-edge trimming function, multi centre folding and multi tri-folding functions.



Standard class finishers

Finisher [FS-531 / FS-612]

The FS-531 is capable of side stitching of a maximum of 50 sheets (80gsm), in addition to a side-stitching function, FS-612 is furnished with a saddle-stitching function and 2 types of folding functions for a maximum paper size of SRA3. If necessary, the system can be expanded to include functions for tasks such as punching and cover sheet insertion.



*1 FS-612 only
*2 With PK-511 installed
*3 With PI-502 installed

Green

Minimal Environment Impact

Eco-friendly materials

Approximately 64% of the outer surfaces and 30% of the weight of resin parts on AccurioPress C3080 series consist of recycled materials. This includes PC/PET developed by Konica Minolta using advanced chemical processing technology. 70% of PC/PET on outer surfaces is PCR (post-consumer recycled).

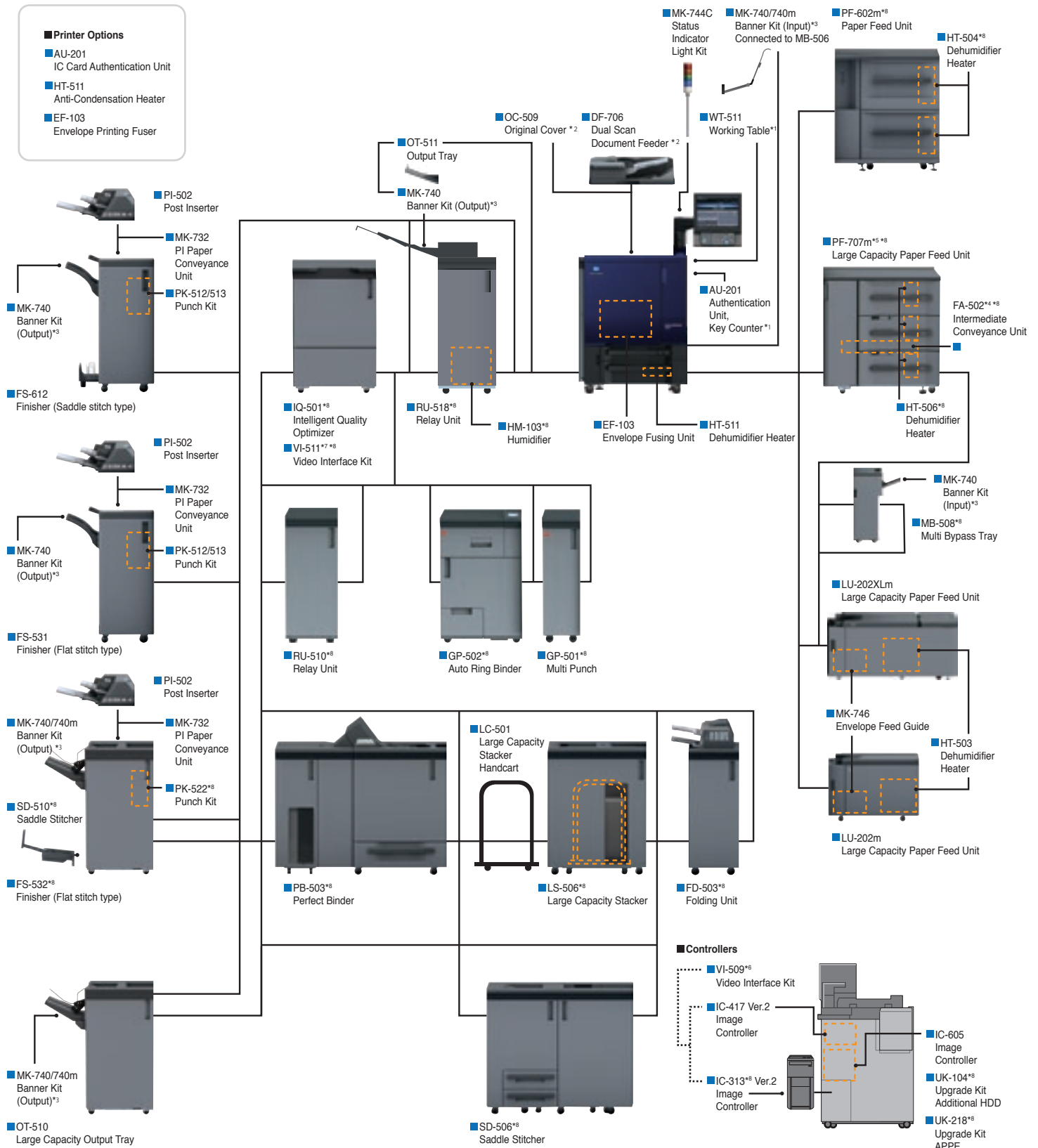


AccurioPress C3080/C3080P/C3070 Spec sheet

AccurioPrint C3070L Spec sheet

System Configuration

Dimensions (unit: mm)



*1 The WT-511 can not be installed when you connect the PF-602m and the PF-707m.

*2 Select one of OC-509 or DF-706. However, it is not for C3080P since it does not have a scanner and the DF function.

*3 MK-740: Banner Kit, MK-740m: Reinforced Banner Kit

*4: FA-502 Feed Adjuster is required when connecting multiple units of PF-707m/ PF-711 or connecting PF-707m/ PF-711 with MB-508/ LU-202XLm.

*5: Multiples PF-707m connection is not allowed when machine configured with MB-508/ LU-202XLm.

*6: VI-509 is required for the system configuration with fiery controller IC-313.

*7: VI-511 is required for the system configuration with IQ-501.

*8: Not available for AccurioPrint C3070L

Paper Feeder Unit PF-707m



Paper Size	SRA3, A3, B4, A4, B5, A5, 13x19, 12x18, 11x17, 9x11, 8 1/2x14, 8 1/2x11 Tab paper (A4, 8 1/2x11) Max. 330.2 mm x 487.7 mm, Min. 100 mm x 140 mm*1	
Paper Type	Plain, Fine, Colour, Coated, Envelope*2	
Paper Weight	62 gsm to 350 gsm	
Max. Tray Capacity (80 gsm)	Upper & Middle Tray	1,390 sheets each
	Bottom Tray	1,850 sheets
	Total	4,630 sheets
Power Source	Inch : 120VAC, Metric : 230VAC	
Dimensions [W] x [D] x [H]	996 mm x 772 mm x 1,038 mm / 39.21" x 30.39" x 40.87"	
Weight	203 kg / 447.4 lb	

*1 For the paper whose width is less than 140 mm, use the small size guide. *2 Only upper tray supports envelopes.

Paper Feeder Unit PF-602m



Paper Size	SRA3, A3, B4, A4, B5, A5, 13x19, 12x18, 11x17, 9x11, 8 1/2x14, 8 1/2x11 Tab paper (A4, 8 1/2x11) Tray (upper): Max. 330 mm x 487 mm, Min. 100 mm x 182 mm Tray (lower): Max. 330 mm x 487 mm, Min. 100 mm x 148 mm	
Paper Type	Plain, Fine, Coated paper	
Paper Weight	62 gsm to 256 gsm	
Max. Tray Capacity (80 gsm)	Upper Tray	62 gsm to 300 gsm
	Lower Tray	62 gsm to 300 gsm
	Total	6,000 sheets (3,000 sheets x2)
Power Source	Supplied both from the main body.	
Max. Power Consumption	DC: 90W or less, AC: 100W or less	
Dimensions [W] x [D] x [H]	947 mm x 750 mm x 1,045 mm / 37.28" x 29.53" x 41.14"	
Weight	Approximately 171 kg / 374.8 lb	

Multi-bypass Tray MB-508



Paper Size	Max. 330 mm x 487 mm (~1,300 mm with MK-740), Min. 100 mm x 148 mm
Paper Weight	62 gsm to 300 gsm
Tray Capacity	128 gsm to 256 gsm
Power Source	250 sheets (80 gsm)
Power Consumption	Supplied from PFU
Dimensions [W] x [D] x [H]	Max. 200W or less
Weight	296 mm x 636 mm x 787 mm / 19.09" x 25.03" x 30.98" (Max. dimensions of the whole unit)
	Approximately 31.5 kg / 69.4 lb

Large Capacity Unit LU-202m/LU-202XLm



Paper Size	SRA3, A3, B4, A4, B5, 13x19, 12x18, 11x17, 9x11, 8 1/2x14, 8 1/2x11 Tab paper (A4, 8 1/2x11) LU-202m: Max. 330 mm x 487 mm, Min. 210 mm x 182 mm*1 LU-202XLm: Max. 330 mm x 762 mm, Min. 210 mm x 182 mm*1
Paper Type	Plain, Fine, Coated paper
Paper Weight	62 gsm to 300 gsm
Paper Capacity (80 gsm)	2,500 sheets*2
Power Source	Supplied both from the main body.
Power Consumption	Max. 40W or less (excluding HT-503)
Dimensions [W] x [D] x [H]	LU-202m: 710 mm x 639 mm x 477 mm / 27.95" x 25.16" x 18.78"
	LU-202XLm: 1,012 mm x 639 mm x 477 mm / 39.84" x 25.16" x 18.78"
Weight	LU-202m: Approximately 42 kg / 92.59 lb
	LU-202XLm: Approximately 60 kg / 132.28 lb

*1 Available types of paper weighing 300 gsm are limited to specific types. *2 Stacked height 275 mm

Banner Kit MK-740/MK-740m



Applicable models	Feeding system	MB-506, MB-508
	Output system	MK-740: OT-502/OT-510/OT-511/FS-612/FS531/FS-532 MK-740m: OT-510/FS-532
Paper Size		Max. 330 mm x 1,300mm Min. Width 100mm
Paper Weights		128 to 256 gsm
Pape Type		Plain, Fine, Coated paper
Paper Capacity (80gsm)		(A4 Plain paper) MK-740: 4,200 sheets, MK-740m: 3,000 sheets (Banner ~762 mm) MK-740: 300 sheets, MK-740m: 1,000 sheets (Banner 763 mm-) MK-740: 100 sheets, MK-740m: 100 sheets

Intelligent Quality Optimizer IQ-501



Option Required	Image Processing Board VI-511
Paper Size	Max. 311 mm x 488 mm, Min. 95 mm x 139 mm
Paper Weight	62 ~ 350 gsm
Paper Width	Max. 350 mm
Power Source	100 ~ 240 VAC, 50/60 Hz
Power Consumption	Max. 700W (including Connection Option)
Dimensions [W] x [D] x [H]	663 mm x 686 mm x 1,020 mm / 26.10" x 27.40" x 40.16"
Weight	Approximately 184 kg / 405.65 lb

Relay Unit RU-518



Sub-Option	Humidifier HM-103
Paper Size	Max. 330.2 mm x 487.7 mm, Min. 95 mm x 133 mm Max. 1,300 mm (Straight/Sub tray)
Paper Weight	62 gsm to 350 gsm
Power Source	Supplied from the main body
Power Consumption	Max. 700W
Dimensions [W] x [D] x [H]	410 mm x 787.2 mm x 1,135 mm / 16-1/4" x 30.99" x 44.69"
Weight	Approximately 80 kg / 176.37 lb

*For Humidifier ON mode, Envelope, Coated, Pre-printed, Blank Insert Sheet, Embossed and Embossed 2 with the weight under 135 gsm or less cannot be used.

Multi Folding Unit FD-503



Hole Pitch	Metric area: 80 mm (2 holes / 4 holes) Inch area: 70 mm (2 holes), 108 mm (3 holes)
Fold Types	Centre-fold, Three fold-in, Three fold-out, Double parallel, Z-fold, Gatefold
Paper Size	Hole Punch 2 holes: SRA3, A3, B4, A4, B5, 12x18, 11x17, 8 1/2x14, 8 1/2x11 3/4 holes: SRA3, A3, B4, A4, B5, 12x18, 11x17, 8 1/2x11 Folding mode Max. 305 mm x 458 mm, Min. 210 mm x 279 mm Post insertion mode Max. 331 mm x 483 mm, Min. 182 mm x 139 mm Straight mode Max. 330 mm x 483 mm, Min. 182 mm x 148 mm
Paper Weight	Punch 62 gsm to 216 gsm Folding mode Centre-Fold / Three Fold-in / Three Fold-out / Z-Fold: 62 gsm to 130 gsm Double Parallel / Gatefold: 62 gsm to 91 gsm Post insertion mode 62 gsm to 300 gsm Straight mode 62 gsm to 350 gsm Sub Tray mode 62 gsm to 350 gsm
Power Source	100VAC to 240VAC, 5VDC (supplied from the main body)
Power Consumption	Max. 180W
Dimensions [W] x [D] x [H]	400 mm*1 x 723 mm x 1,231 mm / 15-3/4" x 28-1/2" x 48-1/2"
Weight	Approximately 130 kg / 285-1/2 lb

*1 Width including the primary (main) tray (with the edge closed): 667 mm
Width including the primary (main) tray (with the edge pulled out): 784 mm

Large Capacity Stacker LS-506



Sub-Option	Stacker Hand Cart LC-501
Paper Size	Stacker tray mode Max. 331 mm x 488 mm, Min. 210 mm x 148 mm Sub tray mode Max. 330 mm x 488 mm, Min. 95 mm x 139 mm
Paper Weight	Stacker tray mode 62 gsm to 350 gsm Sub tray mode 62 gsm to 350 gsm
Paper Capacity(80 gsm)	Stacker tray mode Max. 5,000 sheets Sub tray mode 200 sheets (Z-Fold: 20 sheets, Centre-Fold: 40 sheets)
Power Source	100VAC to 240VAC, 5VDC (Only 5VDC is supplied from the main body)
Power Consumption	Max. 150W or less
Dimensions [W] x [D] x [H]	785 mm x 723 mm x 1,020 mm / 31" x 28-1/2" x 40-1/8"
Weight	Approximately 110 kg / 242-1/2 lb

Perfect Binder PB-503



Paper Size	Body	Max. 307 mm x 221 mm, Min. 139 mm x 210 mm
	Cover	Max. 307 mm x 472 mm, Min. 139 mm x 279 mm
Paper Weight	Body	64 gsm to 105 gsm
	Cover	81 gsm to 216 gsm
Bound Pages (80 gsm)		Approximately 300 sheets max. (less than 30 mm thickness) / Approximately 10 sheets min.
Warm-up Time		Approximately 20 min.
Power Source		100 ~ 240 VAC; 50/60 Hz
Power Consumption		Max. 1,000 W or less, 100VAC 50/60Hz common 5VDC (supplied from the main body)
Dimensions [W] x [D] x [H]		1,360 mm x 775 mm x 1,223 mm / 53-1/2" x 30-1/2" x 48-1/4"
Weight		Approximately 270 kg / 595-1/4 lb

Post Inserter PI-502



Required Option	Mount Kit MK-732
Paper Size	Upper Tray A4, B5, A5, 9x11, 8 1/2x11 Lower Tray SRA3, A3, B4, A4, B5, A5, 12x18, 11x17, 8 1/2x14, 8 1/2x11
Paper Capacity (80 gsm)	Max. 200 sheets
Power Source	Supplied from Finisher FS-532/FS-531/FS-612
Dimensions [W] x [D] x [H]	540 mm x 620 mm x 220 mm / 21-1/4" x 24-1/2" x 8-3/4"
Weight	Approximately 11.7 kg / 25.79 lb

Saddle Stitcher SD-506



Paper Size (S: Short Edge Feed)	Saddle Stitch/Trimming	SRA3, A3, B4, A4S, 12x18, 11x17, 8 1/2x14, 8 1/2x11S Max. 324 mm x 463 mm, Min. 182 mm x 257 mm
	Folding	Centre-Fold: SAR3, A3, B4, A4S, B5S, 12x18, 11x17, 8 1/2x14, 8 1/2x11 Max. 324 mm x 463 mm, Min. 182 mm x 257 mm Three Fold-in: A4S, 8 1/2x11S Max. 330 mm x 483 mm, Min. 100 mm x 148 mm
Paper Weight	Saddle Stitch / Trimming	62 gsm to 244 gsm
	Centre-Fold	62 gsm to 244 gsm
	Three Fold-in	62 gsm to 91 gsm
	Straight (Sub Tray)	62 gsm to 300 gsm*
Stitching Capacity		Max. 50 sheets (62 gsm to 81 gsm)
Trimming Capacity		50 sheets (80 gsm)
Fold Type		Centre-Fold, Three Fold-in
Folding Capacity		Centre-Fold: 30 sets Three Fold-in: 20 sets
Power Source		Supplied from the main unit
Max. Power Consumption		100VAC to 240VAC, 5VDC (supplied from the main body)
Dimensions [W] x [D] x [H]		When the stack output tray closed: 1,170 mm x 775 mm x 1,020 mm / 46" x 30-1/2" x 40-1/4"
Weight		280 kg / 617-1/4 lb

*1 Loading paper weight 49 gsm or less is not warranty.

Finisher FS-531



Paper Weight	Non-sort, Sort/Group, Sub Tray mode	62 gsm to 350 gsm
	Staple mode	62 gsm to 209 gsm
Paper Size (S: Short Edge Feed)	Non-sort, Sort/Group mode	Max. 320 mm x 458 mm, Min. 182 mm x 148 mm, 128 mm x 148 mm*
	Staple mode	Max. 314 mm x 458 mm, Min. 182 mm x 148 mm
	Sub Tray mode	Max. 330 mm x 487 mm, Min. 100 mm x 148 mm
Paper Capacity (Main Tray, 80 gsm)	Non-sort, Sort/Group mode	Max. 3,000 sheets (A4, B5, 8 1/2x11, 16K, 7 1/4x10 1/2)
	Staple mode	*2 to 9 sheets: 100 sets (FD Direction: 417 mm or less) / 50sets (Other) *10 to 20 sheets: 50 sets *21 to 30 sheets: 30 sets *31 to 40 sheets: 25 sets *41 to 50 sheets: 20 sets
Paper Capacity (Sub Tray, 80 gsm)		Max. 100 sheets
Stapling Mode Types	Corner stapling	Parallel or diagonal depending on paper size
(Staple Position)	2 staplings	Center spreading 162 mm pitch
Power Source		24/5VDC (supplied from the main body)
Max. Power Consumption		80W or less
Dimensions [W] x [D] x [H]		424 mm*2 x 656 mm x 990 mm / 16.69"*2 x 25.83" x 39" Width including the primary (main) tray (with the edge closed): 674.5 mm / 26.56" Width including the primary (main) tray (with the edge pulled out): 790.5 mm / 31.12"
Weight		60 kg / 132-1/4 lb

*1 Non-sort mode only *2 Excluding the primary (main) tray

Finisher FS-612



Paper Weight	Non-sort, Sort/Group, Sub Tray mode	62 gsm to 350 gsm
	Staple, Saddle Stitching, Half-Fold, Tri-Folding mode	62 gsm to 105 gsm
Paper Size (S: Short Edge Feed)	Non-sort, Sort/Group mode	Max. 320 mm x 458 mm, Min. 182 mm x 148 mm, 128 mm x 148 mm*
	Staple mode	Max. 314 mm x 458 mm, Min. 182 mm x 148 mm
	Saddle stitching, Half-Fold mode	Max. 320 mm x 458 mm, Min. 210 mm x 279 mm
	Tri-Folding mode	A4S, 8 1/2x11S
	Sub Tray mode	Max. 330 mm x 487 mm, Min. 100 mm x 148 mm
Paper Capacity (Main Tray, 80 gsm)	Non-sort, Sort/Group mode	Max. 2,500 sheets (A4, B5, 8 1/2x11, 16K, 7 1/4x10 1/2, 9x11)
	Staple mode	*2 to 9 sheets: 100 sets (FD Direction: 417 mm or less) / 50sets (Other) *10 to 20 sheets: 50 sets *21 to 30 sheets: 30 sets *31 to 40 sheets: 25 sets *41 to 50 sheets: 20 sets
Paper Capacity (Booklet Tray, 80 gsm)	Saddle Stitching mode	5 sheets: 15 sets (Direction: 299 mm or less) / 20 sets (Other)
	Half-Fold mode	3 sheets: 25 sets (Direction: 299 mm or less) / 33 sets (Other)
	Tri-Folding mode	50 sets
Paper Capacity (Sub Tray, 80 gsm)		Max. 100 sheets
Power Source		24/5VDC (supplied from the main body)
Max. Power Consumption		80W or less
Dimensions [W] x [D] x [H]		424 mm*2 x 656 mm x 990 mm / 16.69"*2 x 25.83" x 39" Width including the primary (main) tray (with the edge closed): 674.5 mm / 26.56" Width including the primary (main) tray (with the edge pulled out): 790.5 mm / 31.12"
Weight		65 kg / 143-1/4 lb

*1 Non-sort mode only *2 Excluding the primary (main) tray

Finisher FS-532



Paper Weight		Staple mode: 62 gsm to 300 gsm Straight / Shift mode: 62 gsm to 350 gsm
Paper Size	Staple mode	Max. 330 mm x 488 mm, Min. 203 mm x 148 mm
	Straight/Shift mode	Max. 330 mm x 487 mm, Min. 100 mm x 148 mm (Using small size guides)
Paper Capacity (80 gsm)		Max. 4,500 sheets (Main + Sub tray)
Stapling Mode Types		Corner stapling: Horizontal, Vertical 2-point stapling: Centre
Power Source		Supplied from the machine
Max. Power Consumption		144W or less
Dimensions [W] x [D] x [H]		544 mm x 723 mm x 1,070 mm / 21-1/2" x 28-1/2" x 42-1/4"
Weight		74 kg / 163-1/4 lb

Large Capacity Output Tray OT-510



Paper Weight		62 gsm to 350 gsm
Paper Size		Max. 330 mm x 487 mm, Min. 100 mm x 148 mm Max. 330.2 mm x 1,200 mm, Min. 100 mm x 148 mm*1
Paper Capacity (sort / group mode)	488 mm or less	Max. 4,200 sheets (80 gsm, 0.03109 m ² to 0.06237 m ²)
	489 mm to 762 mm*1	Max. 300 sheets*2 (128 gsm to 135 gsm)
	763 mm or more*1	Max. 100 sheets (128 gsm to 135 gsm)
	Envelope	100 sheets or more
Paper Capacity (offset sort / offset group mode)		Max. 1,500 sheets (72 gsm to 81 gsm, 0.03109 m ² or more)
Power Source		24VDC (supplied from the main body)
Max. Power Consumption		144W or less
Dimensions [W] x [D] x [H]		544 mm x 723 mm x 1,070 mm / 21" x 28-1/2" x 42"
Weight		Approximately 55 kg / 121 lb

*1 Paper of 489 mm length is available only when the MK-740 plate is installed. *2 MK-740

Punch Kit PK-512/513

Hole Pitch	PK-512	80 mm (2 holes / 4 holes), 108 mm (3 holes)
	PK-513	21 mm, 70 mm, 21 mm (Swedish 4 holes)
Paper Weight		62 gsm to 128 gsm
Paper Size	PK-512	2 holes: A3, B4, A4, B5, 11x17, 8 1/2x14, 8 1/2x11
	PK-513	3/4 holes: A3, B4, A4, B5, 11x17, 8 1/2x11
Power Source		Supplied from the main body.
Max. Power Consumption		40W or less
Dimensions [W] x [D] x [H]		130 mm x 470 mm x 115 mm / 5.12" x 18.5" x 4.53"
Weight		Approximately 3 kg / 6.61 lb

Multi Punch GP-501 *Available in limited area

Paper Size	Bypass Mode	Max. 330 mm x 488 mm, Min. 95 mm x 139 mm
	Punch Mode	A4
Paper Weight	Bypass Mode	64 ~ 350 gsm
	Punch Mode	75 ~ 216 gsm (Plain paper)
Power Source		230V, 50Hz
Dimensions [W] x [D] x [H]		305 mm x 775 mm x 1,020 mm / 12.01" x 30.51" x 40.16"
Weight		Approximately 80 kg / 176.37 lb

Auto Ring Binder GP-502 *Available in limited area

Paper Size	Bypass Mode	Max. 331 mm x 488 mm, Min. 95 mm x 133 mm
	Punch Mode	A4
Paper Weight	Bypass Mode	64 ~ 350 gsm
	Punch Mode	75 ~ 216 gsm (Cover: 163 ~ 216 gsm)
Power Source		24VDC, 2.5A
Dimensions [W] x [D] x [H]		655 mm x 775 mm x 1,020 mm / 25.79" x 30.51" x 40.16"
Weight		Approximately 183 kg / 403.45 lb

► AccurioPress C3080/C3070 General Specifications

		AccurioPress C3080 (P)	AccurioPress C3070
Type		Console type	
Copy Method		4-coupled drum tandem laser electrostatic method	
Resolution	Scan	600 dpi x 600 dpi	
	Print	Equivalent to 3,600 dpi (Image data resolution is 1,200 dpi) x 1,200 dpi	
Gradation		8-bit / 256 Gradation	
CPU		Intel Core i5 4570S 2.9 GHz	
System Memory Capacity		10 GB (C3080P: 4 GB)	
Extended Memory		System memory capacity can be extended up to 18GB with IC-605 or UK-104.	
HDD		1 TB x 3	
Original Type		Sheet, Book, Solid object	
Max. Original Size		A3 or 11" x 17"	
Max. Printing Area		323 mm x 480 mm	
Paper Size (S: Short Edge Feed <input type="checkbox"/>)	Standard tray	SRA3, A3, B4, A4, B5, 13x19, 11x17, 8 1/2x14, 8 1/2x11, 5 1/2x8 1/2S Tab paper (A4, 8 1/2 x 11) Max. 330.2 mm x 487 mm, Min. 140 mm x 182 mm	
	Bypass tray (Option)	Max. 330.2 mm x 487 mm, Min. 100 mm x 148 mm	
Image Loss		Max. 4 mm or less for top edge, Max. 4.5 mm or less for bottom edge, Max. 3.0 mm or less for right/left edges	
Warm-Up Time		390 seconds or less	
First Copy Out Time	Colour	6.5 sec. or less	6.9 sec. or less
	Black and White	4.2 sec. or less	4.2 sec. or less
Print Speed (Colour, B&W)	A4	81 ppm	71 ppm
	A3	45 ppm	39 ppm
Copy Magnification	Fixed	Inch : x 1.000, x 2.000, x 1.545, x 1.294, x 1.214, x 0.785, x 0.772, x 0.647, x 0.500 Metric : x 1.000, x 2.000, x 1.414, x 1.189, x 0.840, x 0.707, x 0.500	
	Zoom	x 0.250 to x 4.000 (Each 0.001 step)	
Tray Capacity (80 gsm)	Standard	Tray 1 (500 sheets) Tray 2 (1,000 sheets)	
	Option	MB-506 (Multi-bypass, 250 sheets)*1*2 PF-602m (3,000 sheets x 2)*1 PF-707m (1,390 sheets x 2, 1,850 sheets x 1)*1 LU-202m / LU-202XLm (2,500 sheets)*1	
Paper Weight	Standard	62 gsm to 256 gsm*3 (Smaller than A4, Letter: 62 gsm ~ 216 gsm)	
	Option	PF-602m / LU-202m / LU-202XLm: 62 gsm to 300 gsm MB-506 / PF-707m: 62gsm to 350gsm	
Continuous Copy Count		Up to 9,999 sheets	
Power Source		Metric: AC220 to 240V, 21A, 50/60 Hz Inch: AC208 to 240V, 22A, 60 Hz	
Power Consumption		Metric: Max. 4,700W or less (Main body only) Inch: Max. 4,900W or less (Main body only)	
Dimensions [W] x [D] x [H]		800 mm*4 x 903 mm*5 x 1,076 mm*6	
Weight		Approximately 316 kg / 697 lb (Main body only)	

*1 MB-506, PF-602m, PF-707m, LU-202m and LU-202XLm are the options.
*2 PF-602m and PF-707m are not available when MB-506 is installed.
*3 For paper size A4 or smaller than 8 1/2x11, it is up to 216 gsm. *4 Excluding the control panel, output tray, work table.
*5 Including the rear duct. *6 Height to the top of the original cover excluding the control panel.

Envelope Fuser Unit EF-103

Envelope weight	70 gsm to 100 gsm
Envelope Size Paper length in the main scan direction	100 mm to 245 mm*
	148 mm to 375 mm
Power Source	Supplied from the main body.
Power Consumption	2430W or less
Dimensions [W] x [D] x [H]	200 mm x 690 mm x 235 mm / 7.87" x 27.17" x 9.25"
Weight	Approximately 18.8 kg / 41.45 lb

* When the paper length is less than 139.7 mm, paper feed assist parts must be connected.

Dual Scan Document Feeder DF-706

Paper Type	Normal original mode	Simplex original mode: 35 gsm to 210 gsm Duplex original mode: 50 gsm to 128 gsm
	Mixed original mode	Simplex original mode, Duplex original mode: 50 gsm to 128 gsm
Paper Size	A3, B4, A4, B5, A5, B6S, 11x17, 8 1/2x11	
Capacity	300 sheets (80 gsm)	
Scan Speed (A4)	At copying (600dpi)	Full colour: Simplex 75 ppm / Duplex 150 ppm (A4 horizontal) Black and White: Simplex 80 ppm / Duplex 160 ppm (A4 horizontal)
	At scanning (300dpi)	Full colour/Black and White: Simplex 120 ppm / Duplex 240 ppm (A4 horizontal)
Power Source	Supplied from the machine	
Dimensions [W] x [D] x [H]	618 mm x 575 mm x 180 mm / 24.31" x 22.63" x 7.06"	
Weight	Approximately 15.1 kg / 33.31 lb	

► AccurioPress C3080/C3070 Printer Controller

Image Controller IC-605

	AccurioPress C3080/C3070	AccurioPress C3080P
Type	Embedded (AIC to the engine, option)	
CPU	Conforms with main unit specification	
Memory	10 GB (Standard of the main body) + 4 GB (IC-605A) + 4 GB (UK-104) Max. 18 GB	4 GB(Standard of the main body) + 8 GB (IC-605B) + 4 GB (UK-104) Max. 18 GB
	HDD	1 TB x 3 (Standard of the main body) + 500 GB (UK-104) Max. 3.5 TB
Page-description Language	Adobe PostScript3 (CPSI3020), PDF direct print (PDF version 1.7), APPE (version 4.2) (UK-104 and UK-218 are required), PDF/VT (version 2.0) (UK-104 and UK-218 are required), TIFF direct print (TIFF version 6 compliance), PPML (version 2.2), PCL-5c compatible, PCL XL (PCL5 version 3) compatible, Pserver (IPX/SPX), LPD / LPR (TCP/IP), IPP (TCP/IP), AppleTalk (EtherTalk), Bonjour (TCP/IP), Web service printing (TCP/IP), NPrinter / RPrinter(IPX/SPX), Raw Port (TCP/IP), SMB	
Printing Method		
OS	PS Plug-in: Windows 7 / 8.1 / 10 Windows Server 2008 / 2008R2 / 2012 / 2012R2 / 2016 Mac OS 10.8 / 10.9 / 10.10 / 10.11 PS PPD*: Windows 7 / 8.1 / 10 Windows Server 2008 / 2008R2 / 2012 / 2012R2 Linux CUPS	
System	Linux	
Interface	Conforms with main unit specification	
Scanner Resolution	200 / 300 / 400 / 600 dpi	
Data Format	PDF, TIFF, JPEG, XPS	
Driver	HDD Twain Driver, Real Time Mode Twain Driver	

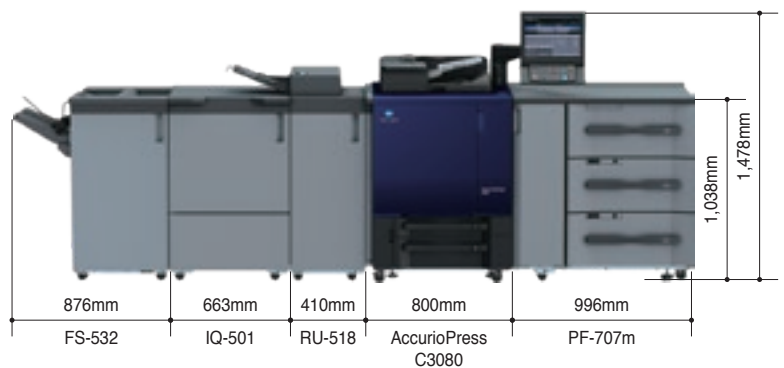
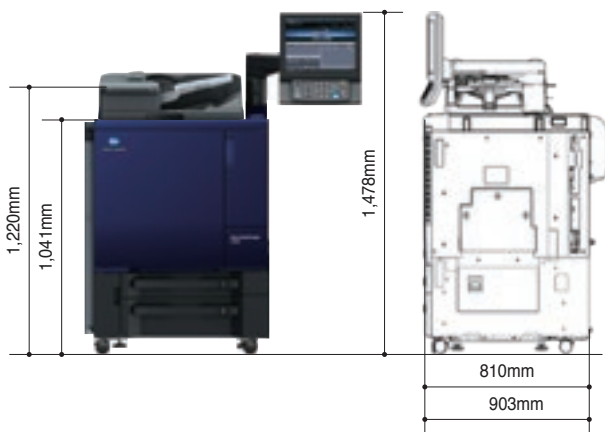
Image Controller IC-417 Ver.2.0 (EFI)

Type	Embedded
CPU	Intel Celeron G8120 2.7 GHz
Memory	2 GB
HDD	500 GB
Network	10 / 100 / 1000 Base-T
Power Source	Max. 220W
Resolution	600 x 600 dpi, 1,200 x 1,200 dpi
Page Description Language	Adobe PostScript3 (CPSI 3020), PDF Ver.1.7, PCL (5, 6) emulation (TBD)
Protocol (Printing Method)	TCP/IP, SMB, LPR, Bonjour, SNMP, IPP, FTP (TBD)
OS	Windows 7* / 8.1* / 10* Windows Server 2008*1 / 2012*1 / 2016 Mac OS 10.8 / 10.9 / 10.10 / 10.11 / 10.12 (TBD)
System	Linux
Main fonts	138 fonts
Driver	PostScript 3
Scanner Resolution	Fiery Impose-Compose, Hot Folder, Auto Trapping, Secure Erase, ES2000/EFI Color Profiler Suite, Embedded Productivity Package, Job Master (TBD)

Image Controller IC-313 Ver.2.0 (EFI)

Type	Server
CPU	Intel Core i5 4570 2.9GHz
Memory	4 GB
HDD	1 TB
Network	10 / 100 / 1000 Base-T
Power Source	Max. 350W
Resolution	600 x 600 dpi, 1,200 x 1,200 dpi
Page Description Language	Adobe PostScript3 (CPSI 3020), PDF Ver.1.7, PCL (5, 6) emulation (TBD)
Protocol (Printing Method)	TCP/IP, SMB, LPR, Bonjour, SNMP, IPP, FTP (TBD)
OS	Windows 7* / 8.1* / 10* Windows Server 2008*1 / 2012*1 / 2016 Mac OS 10.8 / 10.9 / 10.10 / 10.11 / 10.12 (TBD)
System	Windows 10
Main fonts	138 fonts
Driver	Twain Plug-in
Scanner Resolution	Fiery Impose-Compose, Hot Folder, Auto Trapping, Secure Erase, ES2000/EFI Color Profiler Suite, Embedded Productivity Package, Job Master (TBD)

► Dimension





FOR THE EARTH. FOR THE FUTURE.

Regional Headquarters

Konica Minolta Business Solutions Asia Pte Ltd.

30 Pasir Panjang Road, #06-32

Mapletree Business City

Singapore 117440

Tel: +65 6361 2800

Fax: +65 6361 2888

Email: enquiry@konicaminolta.sg

www.konicaminolta.asia/business

Presence in the region

Bangladesh . Bhutan . Brunei . Cambodia . Indonesia . Laos . Malaysia . Mauritius . Myanmar . Philippines . Singapore . Sri Lanka . Thailand . Vietnam

About Konica Minolta Business Solutions Asia

Konica Minolta Business Solutions Asia is a leader in print and enterprise content management focusing on optimisation, productivity and information sharing via its broad range of office and production printing solutions and services. Backed by strong service standards and proficient support staff, Konica Minolta has won numerous awards and recognition, including placement in the Leaders Quadrant on the Gartner 2014 Magic Quadrant for Managed Print Services (MPS) and Managed Content Services (MCS). Konica Minolta, Inc. has also been named to the Dow Jones Sustainability World Index for four years in a row. For more information, please visit: <http://www.konicaminolta.sg/business/>.

Our organisation is certified according to ISO27001, ISO9001, ISO14001 and ISO13485 standards.